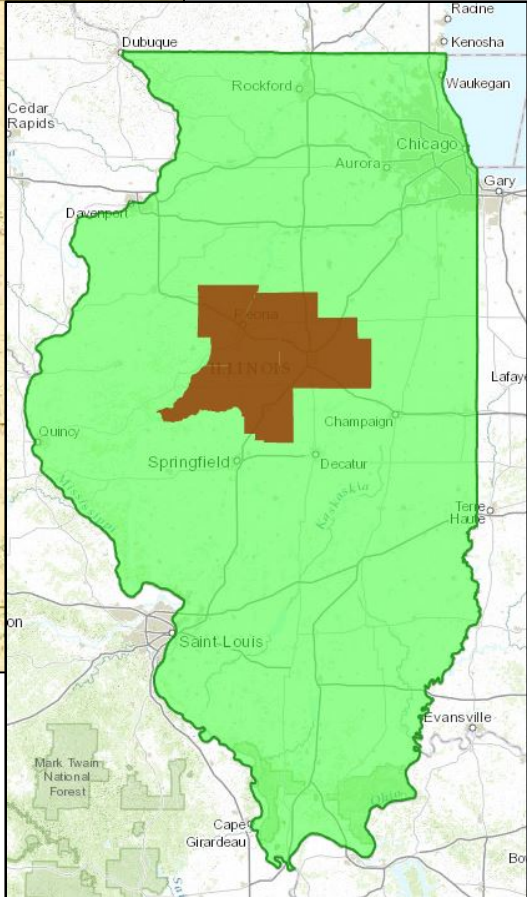
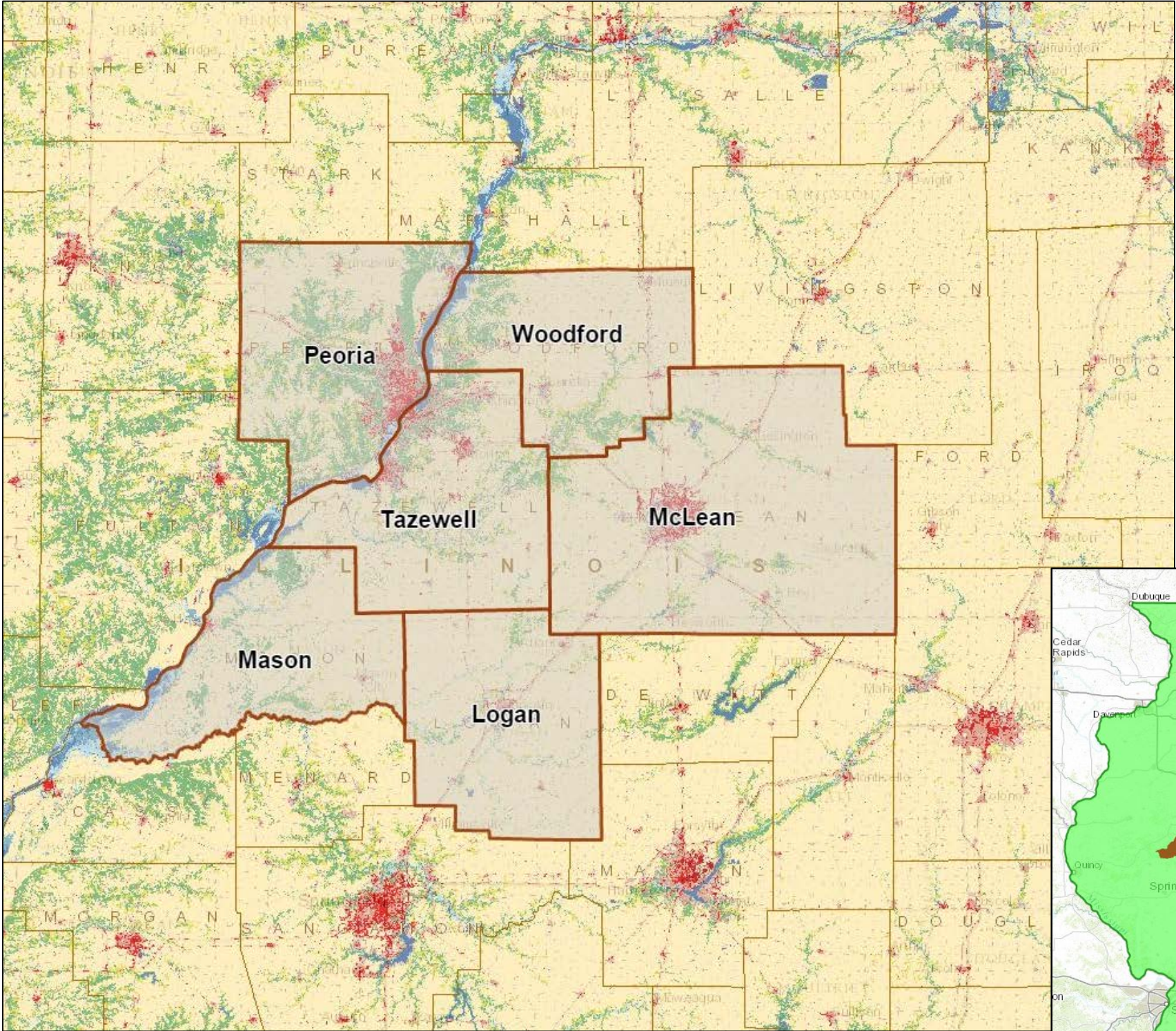


Greater Peoria Region, IL



- The region includes the following counties:
- Logan, McLean, Mason, Peoria, Tazewell, and Woodford counties

Economic Attributes of Greater Peoria Region

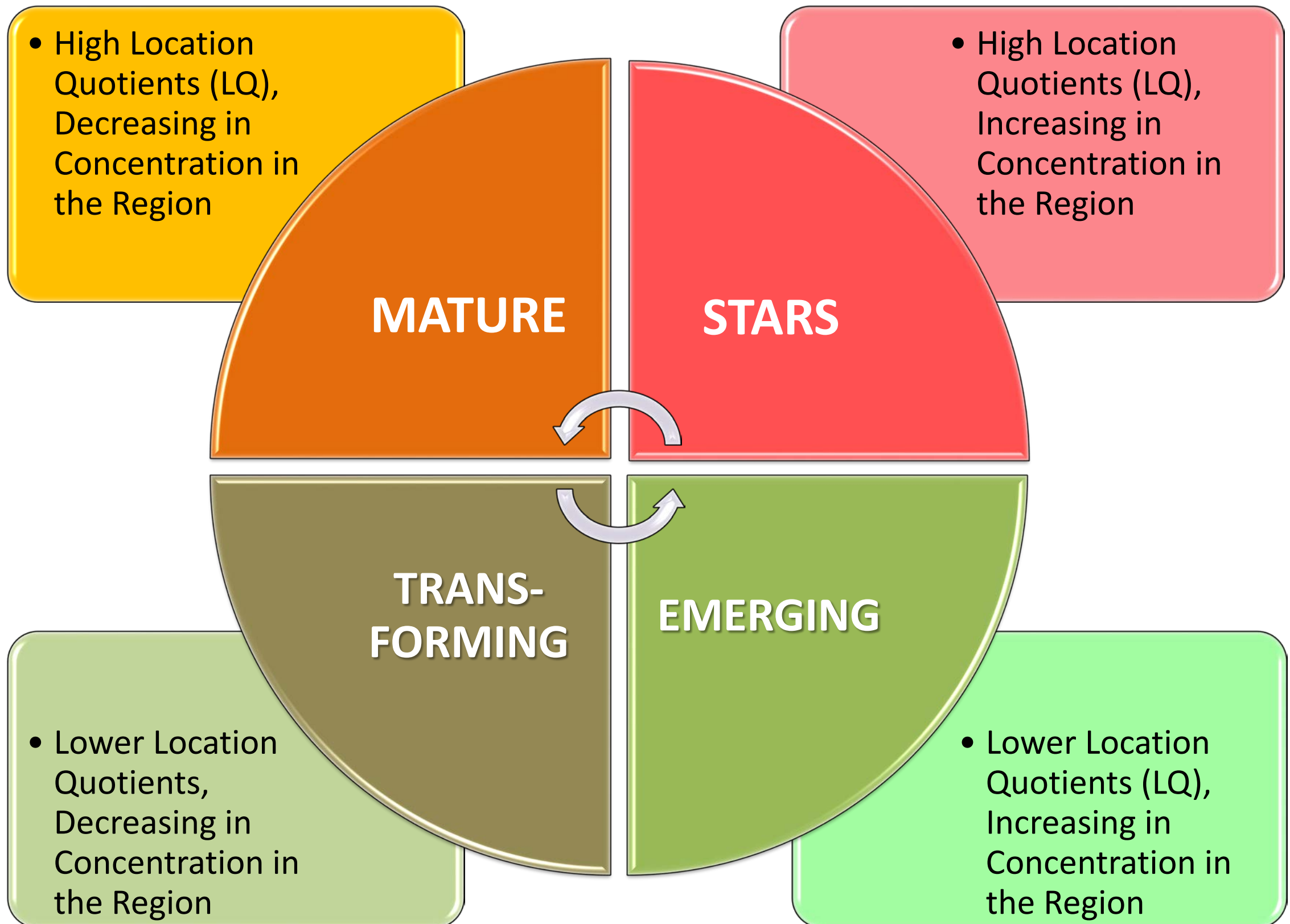
Economic & Demographic Attributes	Value	Remarks	Source
Population (2013)	582,913	People living in the region	Census
Jobs (2012)	343,201	Full and part-time jobs	EMSI (QCEW, BLS; BEA)
Average Earnings (2012)	\$54,195	Include wages, salaries, supplements and proprietor income	EMSI (BLS; BEA)
GRP, Gross Regional Product (2012)	\$31,056,242,084	Final market value of all goods and services produced in the region	EMSI (BEA; QCEW, BLS)
Exports (2012)	\$47,406,773,967	\$ earned from selling goods and services to foreign and external domestic regions	EMSI model (BEA)
Imports (2012)	\$43,757,096,087	\$ spent on procuring goods and services from foreign and external domestic region	EMSI model (BEA)

- Trade balance (exports minus imports) for Greater Peoria Region is positive: \$ 3.65 billion
- Productivity (GRP/Job) for the region is \$ 90,490
- Illinois's state average for GRP/Job is \$ 92,283

Greater Peoria Region, Industry Cluster Analysis, 2007-2012

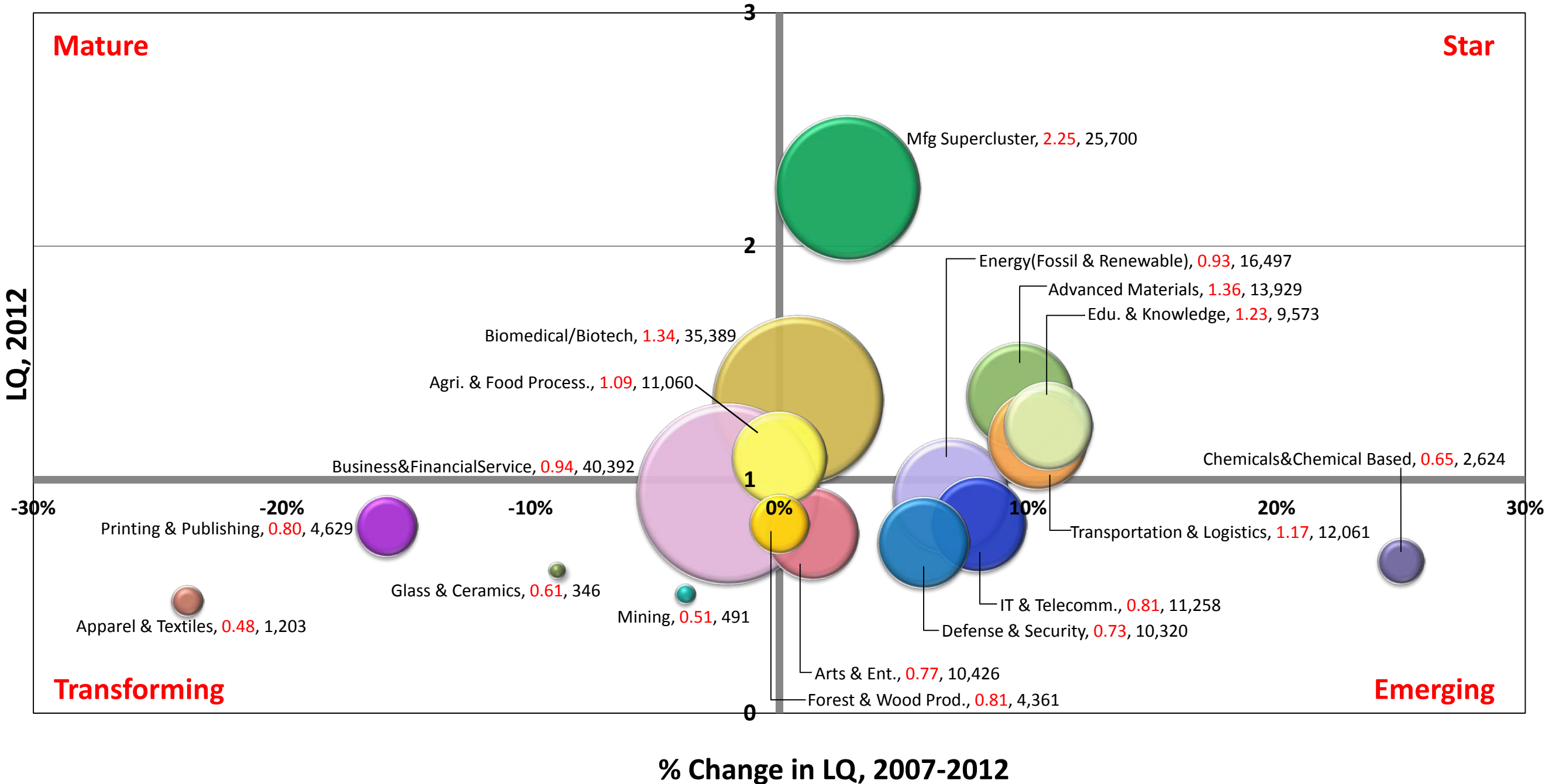
Industry Cluster	Jobs 2012	LQ 2012	LQ % Change, 2007-2012	Establishment 2014	Classification, 2007-2012
Business & Financial Services	40,392	0.94	-2.1%	1,818	TRANSFORMING
Biomedical/Biotechnical (Life Sciences)	35,389	1.34	0.8%	476	STAR
Manufacturing Supercluster	25,700	2.25	2.7%	224	STAR
Energy (Fossil & Renewable)	16,497	0.93	6.9%	825	EMERGING
Machinery Manufacturing	15,139	6.88	-2.1%	51	MATURE
Advanced Materials	13,929	1.36	9.7%	193	STAR
Transportation & Logistics	12,061	1.17	10.4%	476	STAR
Information Technology & Telecommunications	11,258	0.81	8.0%	500	EMERGING
Agribusiness, Food Processing & Technology	11,060	1.09	0.0%	416	MATURE
Arts, Entertainment, Recreation & Visitor Industries	10,426	0.77	1.3%	392	EMERGING
Defense & Security	10,320	0.73	5.8%	322	EMERGING
Education & Knowledge Creation	9,573	1.23	10.8%	147	STAR
Fabricated Metal Product Manufacturing	5,228	1.92	9.7%	117	STAR
Printing & Publishing	4,629	0.8	-15.8%	239	TRANSFORMING
Forest & Wood Products	4,361	0.81	0.0%	344	TRANSFORMING
Chemicals & Chemical Based Products	2,624	0.65	25.0%	88	EMERGING
Primary Metal Manufacturing	2,380	3.05	13.4%	10	STAR
Transportation Equipment Manufacturing	1,626	0.57	-24.0%	19	TRANSFORMING
Apparel & Textiles	1,203	0.48	-23.8%	81	TRANSFORMING
Computer & Electronic Product Manufacturing	955	0.45	18.4%	15	EMERGING
Mining	491	0.51	-3.8%	20	TRANSFORMING
Electrical Equipment, Appliance & Component Mfg	371	0.50	-18.0%	12	TRANSFORMING
Glass & Ceramics	346	0.61	-9.0%	14	TRANSFORMING

Cluster Bubble Chart Interpretation



Greater Peoria Region

Industry Cluster Analysis, 2007-2012

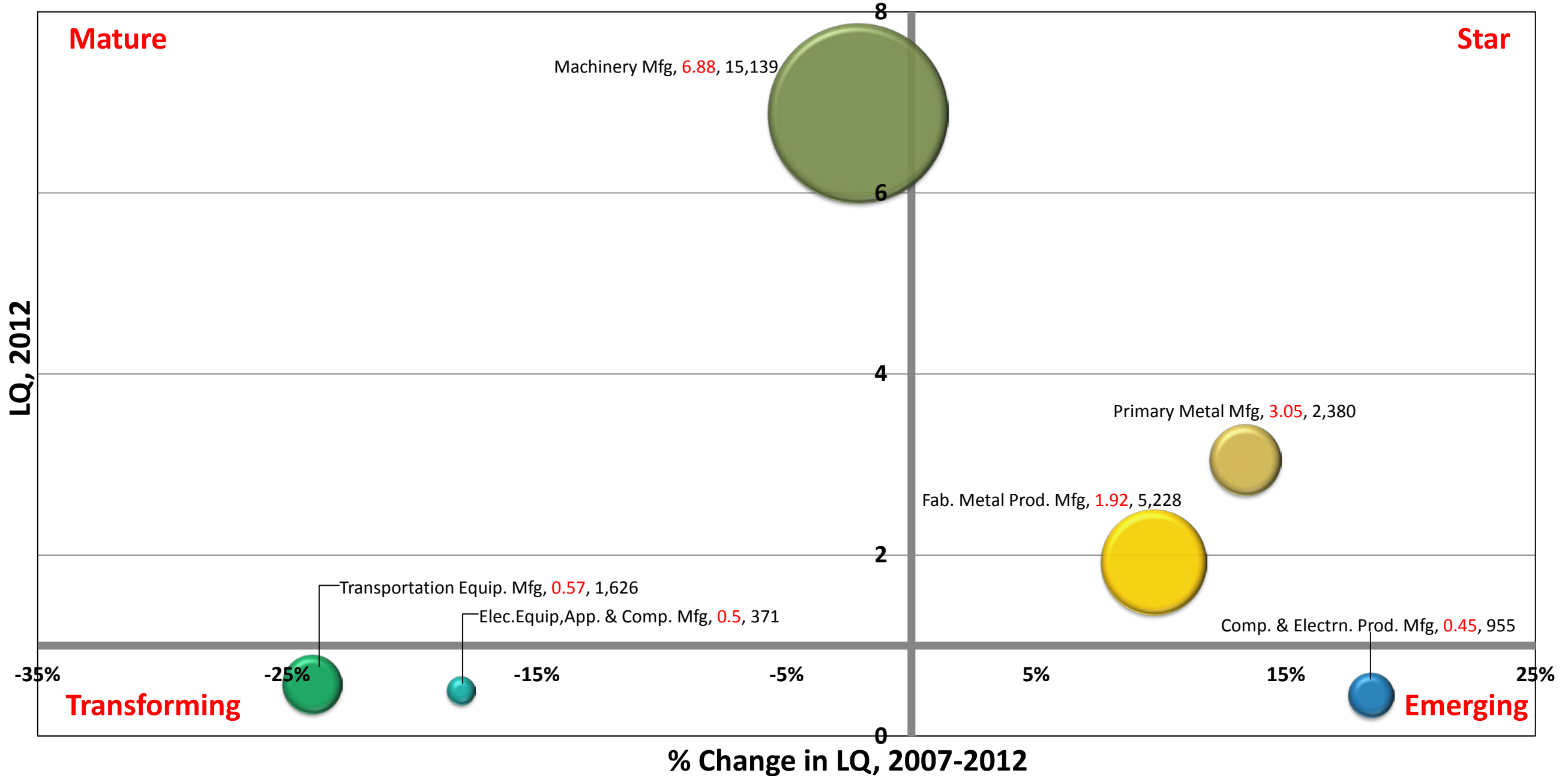


Note: Label includes cluster name, LQ 2012, and Employment 2012

Data Source: EMSI 2014.3 (QCEW Employees, Non-QCEW Employees, Self-Employed, and Extended Proprietors), industry cluster definitions by PCRD

Greater Peoria Region

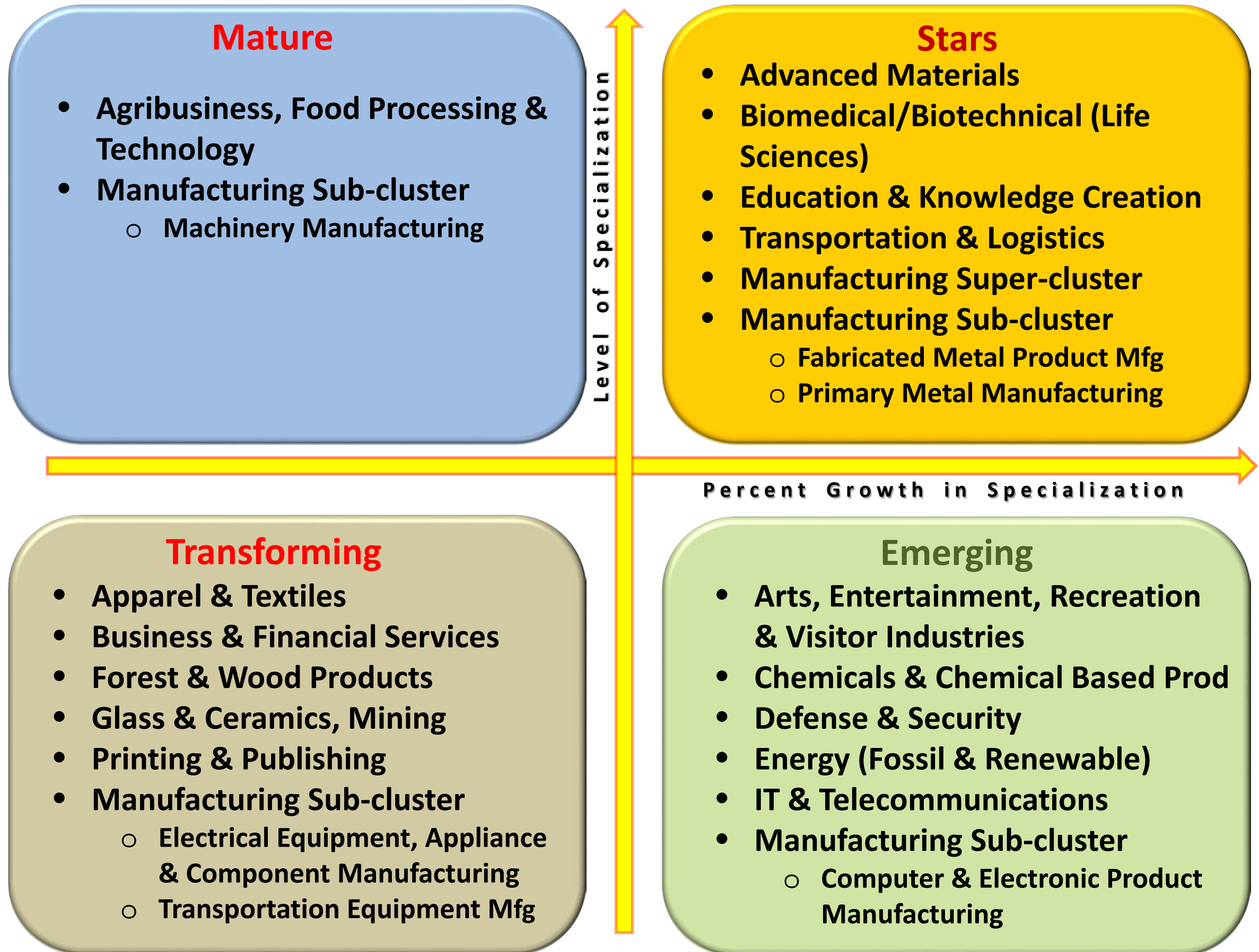
Manufacturing Sub Cluster Analysis, 2007-2012



Note: Label includes cluster name, LQ 2012, and Employment 2012

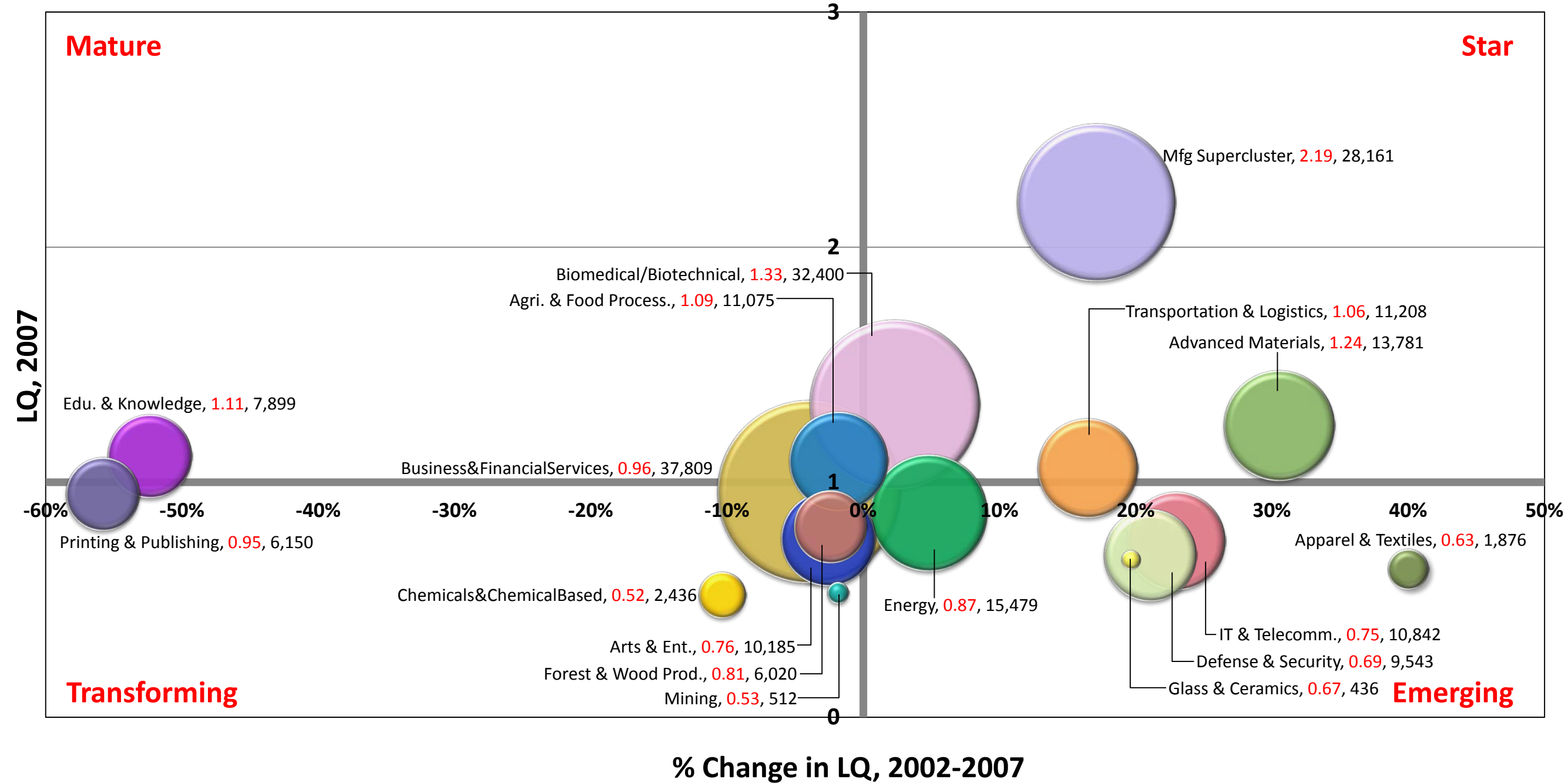
Data Source: EMSI 2014.3 (QCEW Employees, Non-QCEW Employees, Self-Employed, and Extended Proprietors), industry cluster definitions by PCRD

Greater Peoria Region, Industry Cluster Analysis, 2007-2012



Greater Peoria Region

Industry Cluster Analysis, 2002-2007

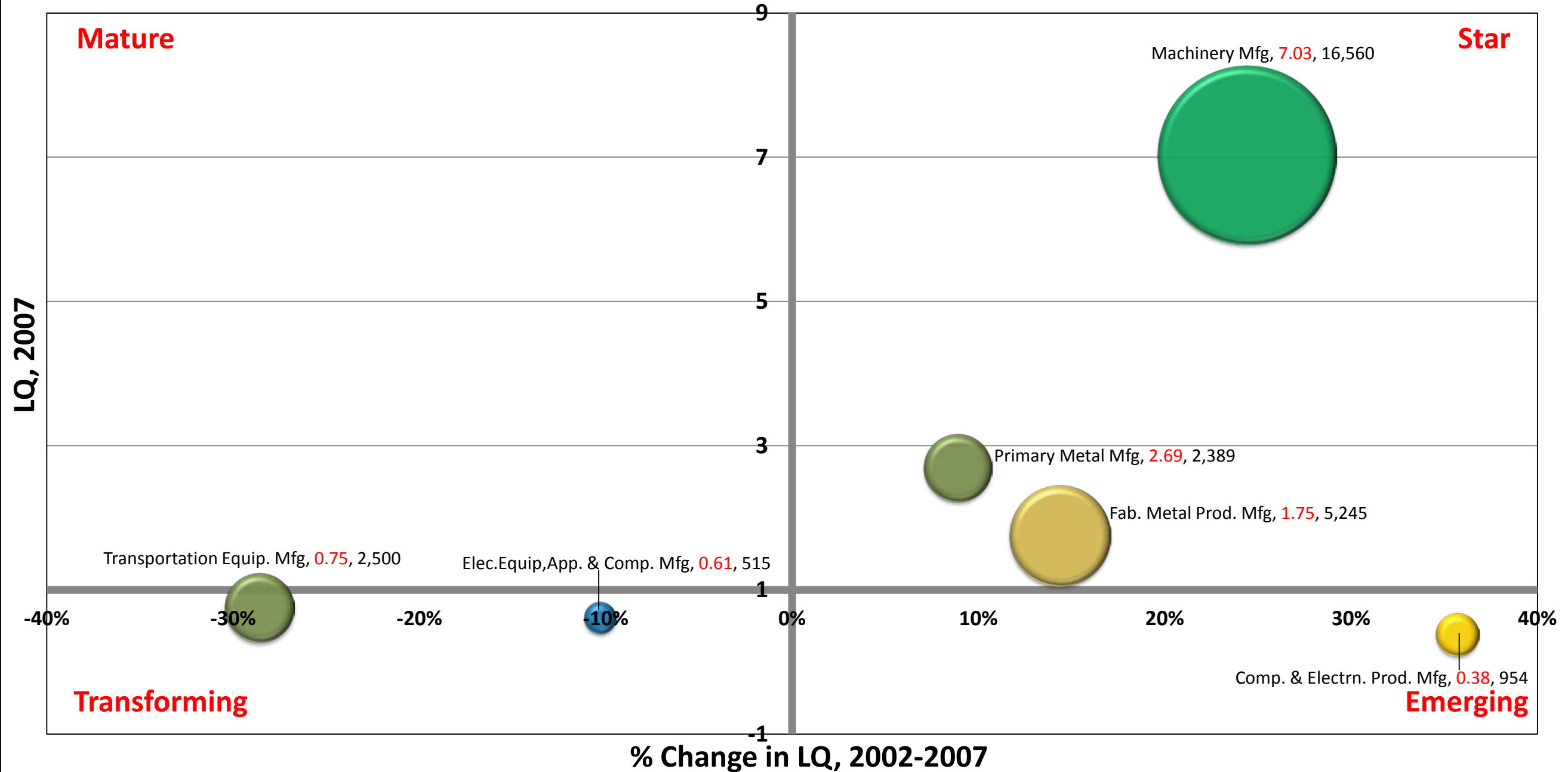


Note: Label includes cluster name, **LQ 2007**, and Employment 2007

Data Source: EMSI 2014.3 (QCEW Employees, Non-QCEW Employees, Self-Employed, and Extended Proprietors), industry cluster definitions by PCRD

Greater Peoria Region

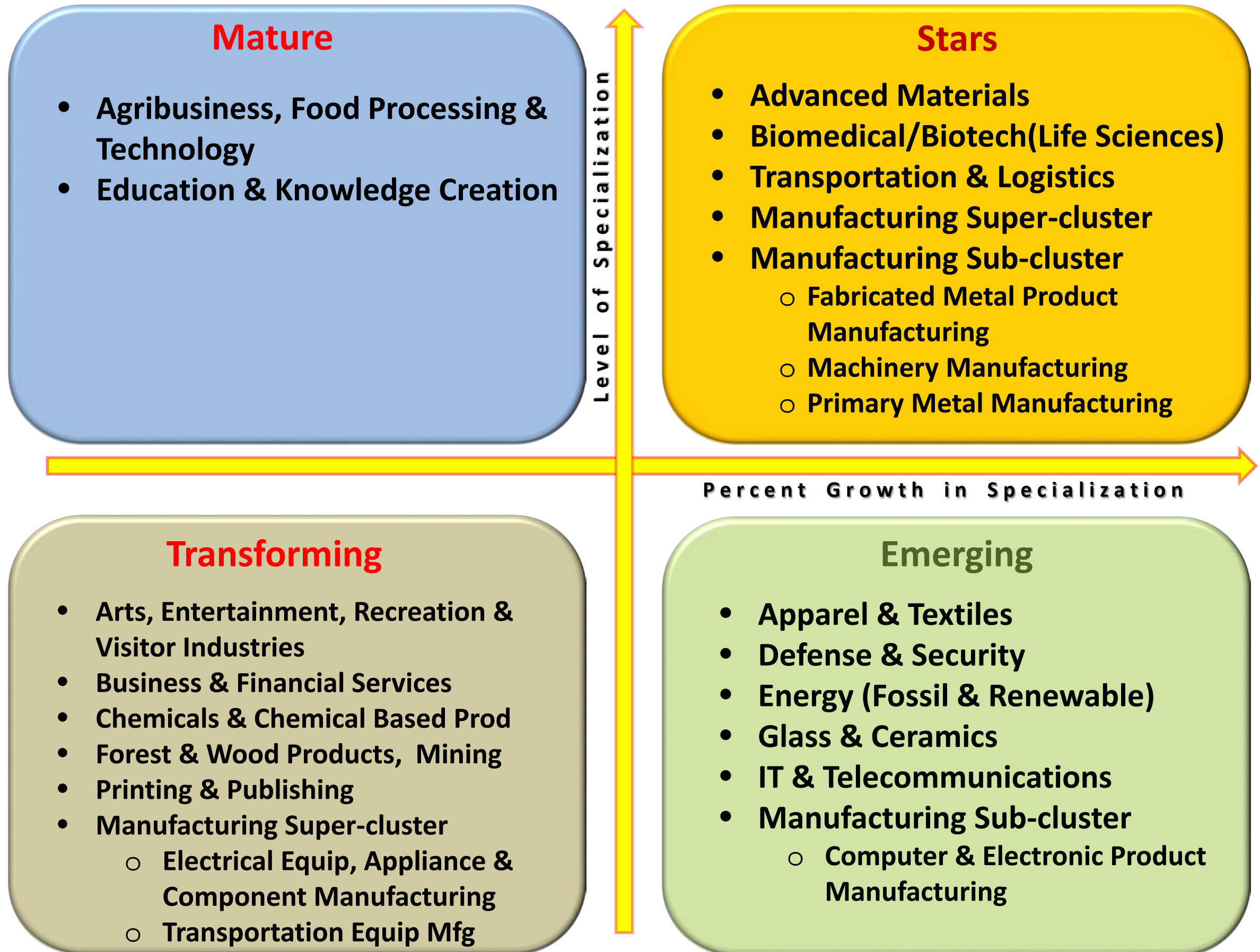
Manufacturing Sub Cluster Analysis, 2002-2007



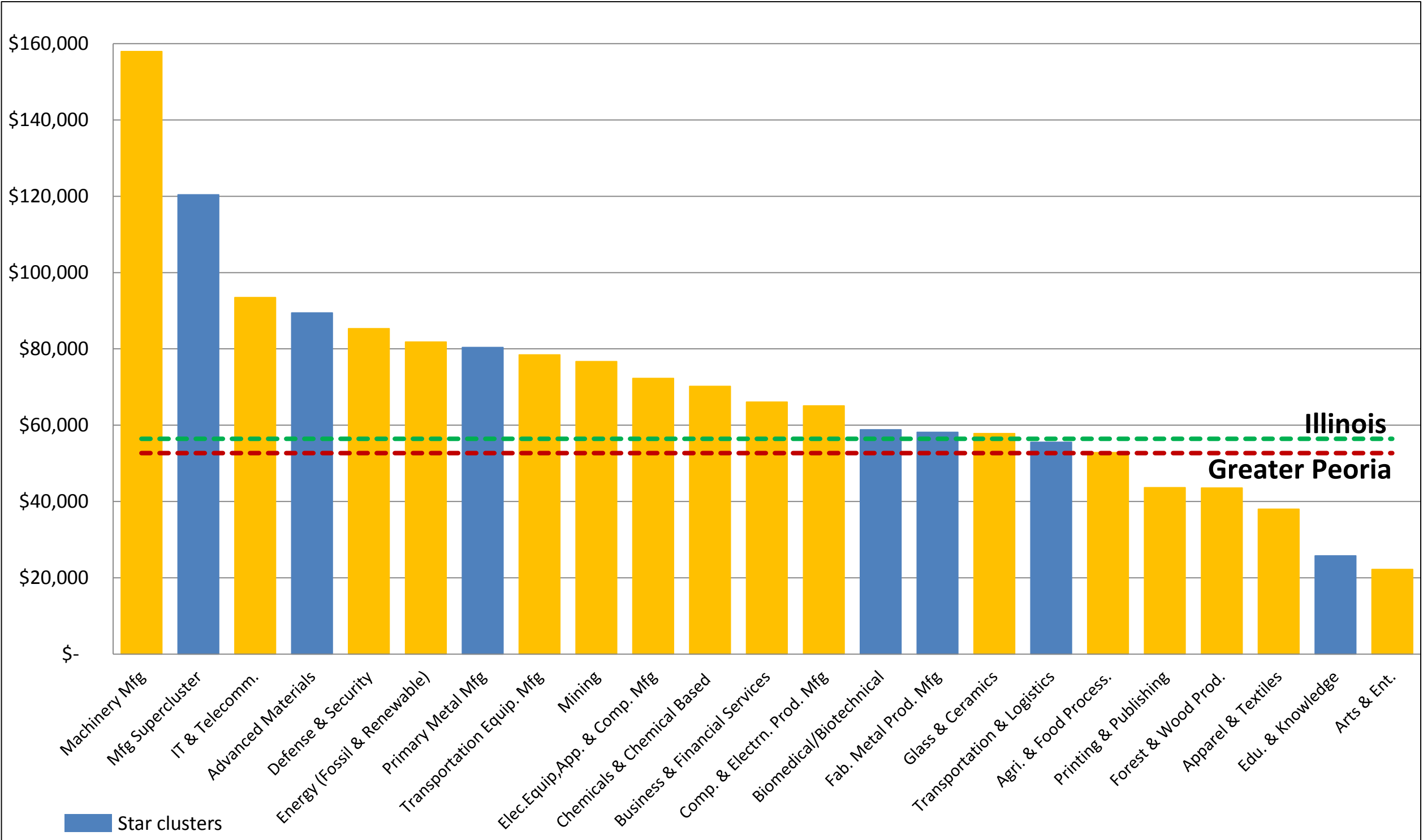
Note: Label includes cluster name, LQ 2007, and Employment 2007

Data Source: EMSI 2014.3 (QCEW Employees, Non-QCEW Employees, Self-Employed, and Extended Proprietors), industry cluster definitions by PCRD

Greater Peoria Region, Industry Cluster Analysis, 2002-2007



Greater Peoria Region, Average Earnings, 2014



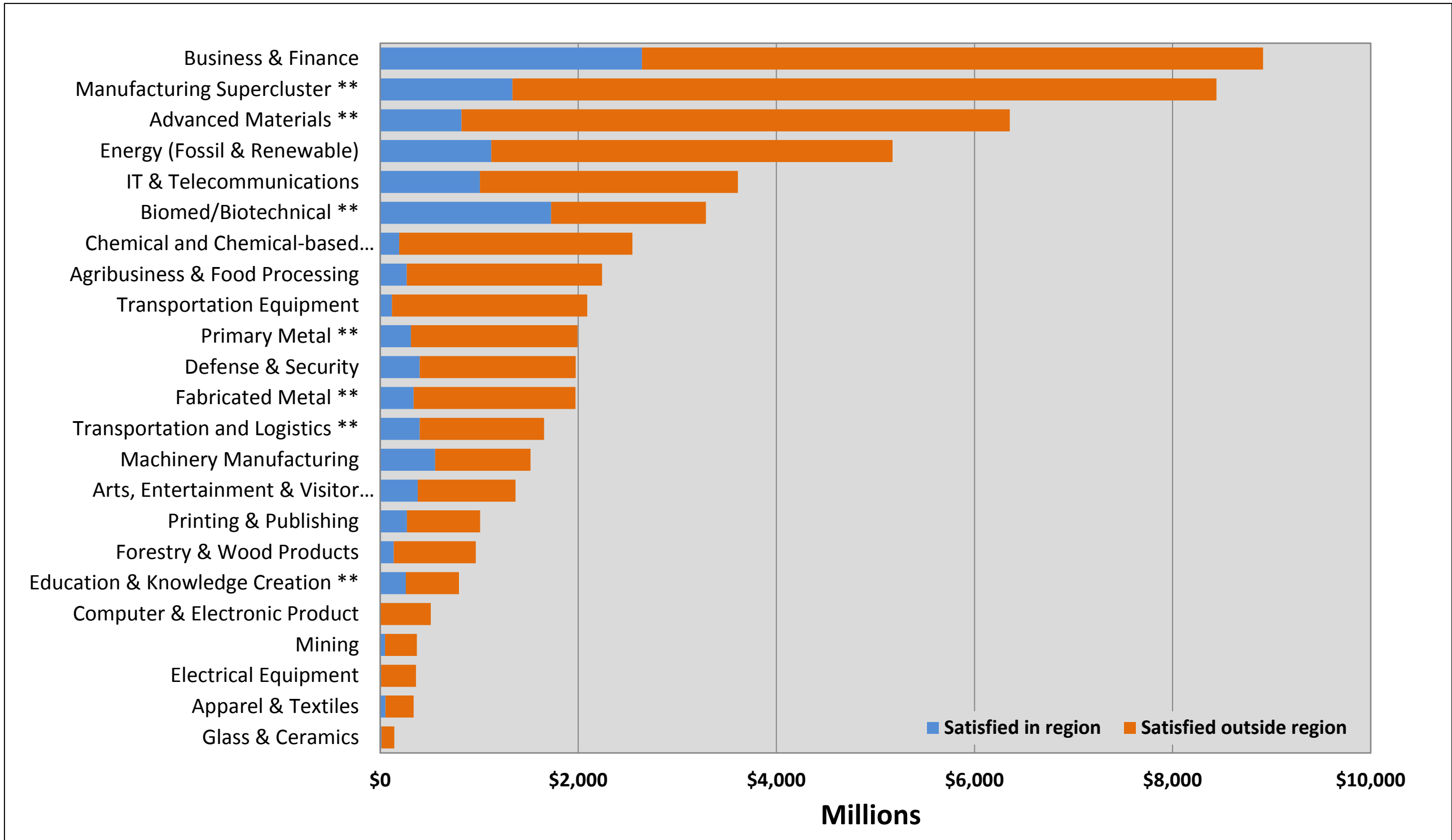
Data Source: EMSI 2014.3 (QCEW Employees, Non-QCEW Employees, Self-Employed, and Extended Proprietors), industry cluster definitions by PCRD

Greater Peoria Region, Shift-Share Analysis, 2007-2012

Industry Cluster Name	Jobs, 2012	Job Change, 2007-2012	Industry Mix Effect	Competitive Effect (Regional Shift, 2007-2012)	Cluster Classification, 2007-2012
Advanced Materials	13,929	148	(1,087)	1,206	STAR
Transportation & Logistics	12,061	853	(298)	1,128	STAR
Energy (Fossil & Renewable)	16,497	1,018	(49)	1,035	EMERGING
Education & Knowledge Creation	9,573	1,674	719	939	STAR
Information Technology & Telecommunications	11,258	416	(369)	762	EMERGING
Manufacturing Supercluster	25,700	(2,461)	(3,175)	655	STAR
Chemicals & Chemical Based Products	2,624	188	(313)	496	EMERGING
Fabricated Metal Product Manufacturing	5,228	(17)	(469)	442	STAR
Defense & Security	10,320	776	337	420	EMERGING
Primary Metal Manufacturing	2,380	(9)	(291)	277	STAR
Computer & Electronic Product Manufacturing	955	1	(134)	132	EMERGING
Biomedical/Biotechnical (Life Sciences)	35,389	2,989	2,816	105	STAR
Arts, Entertainment, Recreation & Visitor Industries	10,426	241	231	(12)	EMERGING
Mining	491	(21)	0	(22)	TRANSFORMING
Agribusiness, Food Processing & Technology	11,060	(15)	(3)	(35)	MATURE
Glass & Ceramics	346	(90)	(56)	(35)	TRANSFORMING
Forest & Wood Products	4,361	(1,660)	(1,629)	(43)	TRANSFORMING
Electrical Equipment, Appliance & Component Mfg	371	(144)	(64)	(81)	TRANSFORMING
Apparel & Textiles	1,203	(673)	(306)	(371)	TRANSFORMING
Machinery Manufacturing	15,139	(1,421)	(1,067)	(389)	MATURE
Transportation Equipment Manufacturing	1,626	(875)	(358)	(522)	TRANSFORMING
Business & Financial Services	40,392	2,582	3,305	(801)	TRANSFORMING
Printing & Publishing	4,629	(1,522)	(644)	(891)	TRANSFORMING

Data Source: EMSI 2014.3 (QCEW Employees, Non-QCEW Employees, Self-Employed, and Extended Proprietors), industry cluster definitions by PCRD
 Red numbers in parenthesis are negatives

Regional Requirements, Expenditure & Leakages, 2012

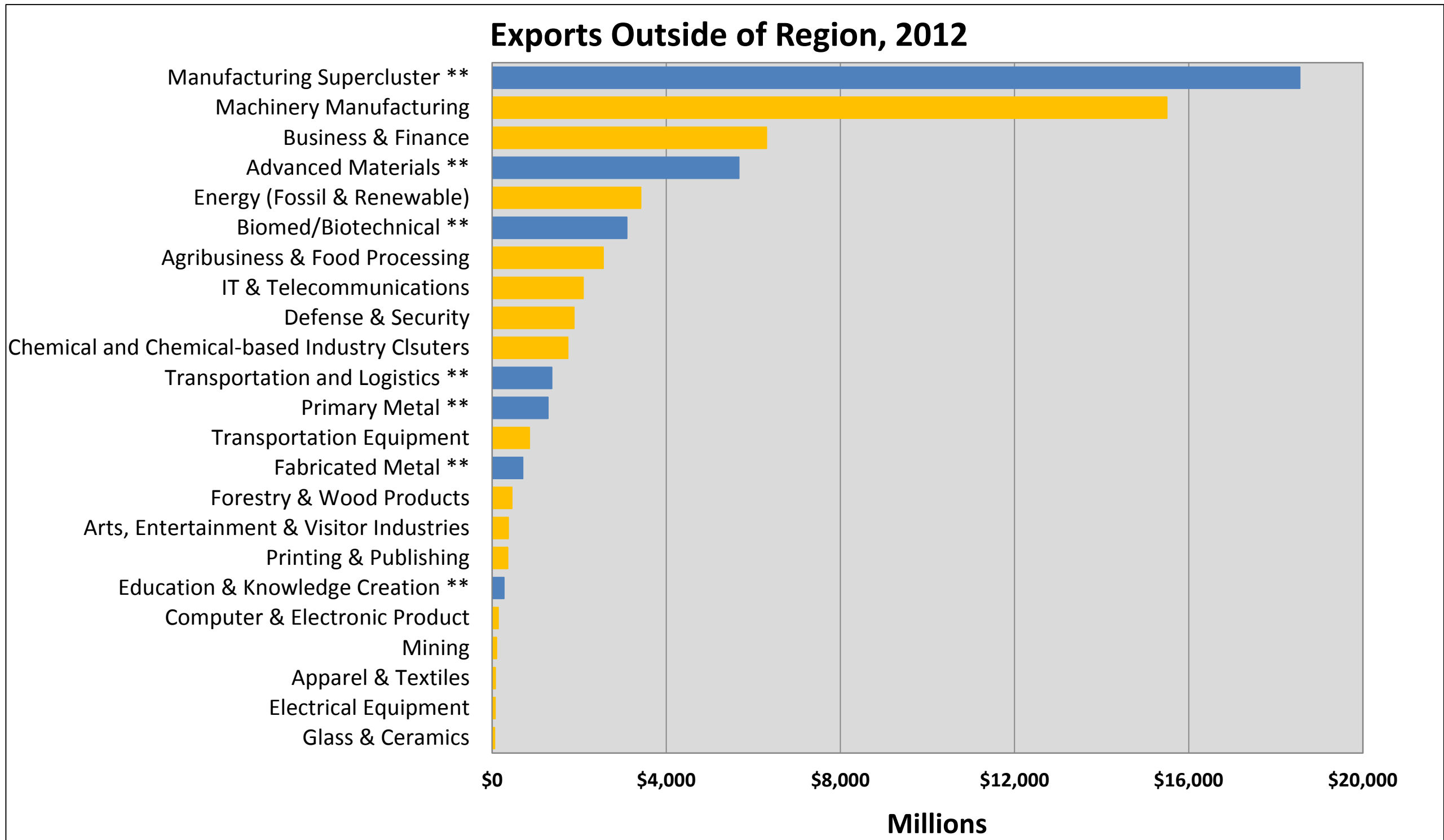


○ The bar shows the total regional requirements/use

Note: ** presents "Star Clusters in 2012"

Data Source: EMSI 2014.3 (QCEW Employees, Non-QCEW Employees, Self-Employed, and Extended Proprietors), industry cluster definitions by PCRD

Regional Exports by Clusters, 2012



Note: ** presents "Star Clusters in 2012"

Data Source: EMSI 2014.3 (QCEW Employees, Non-QCEW Employees, Self-Employed, and Extended Proprietors), industry cluster definitions by PCRD

Exports per Job by Industry Clusters, 2012

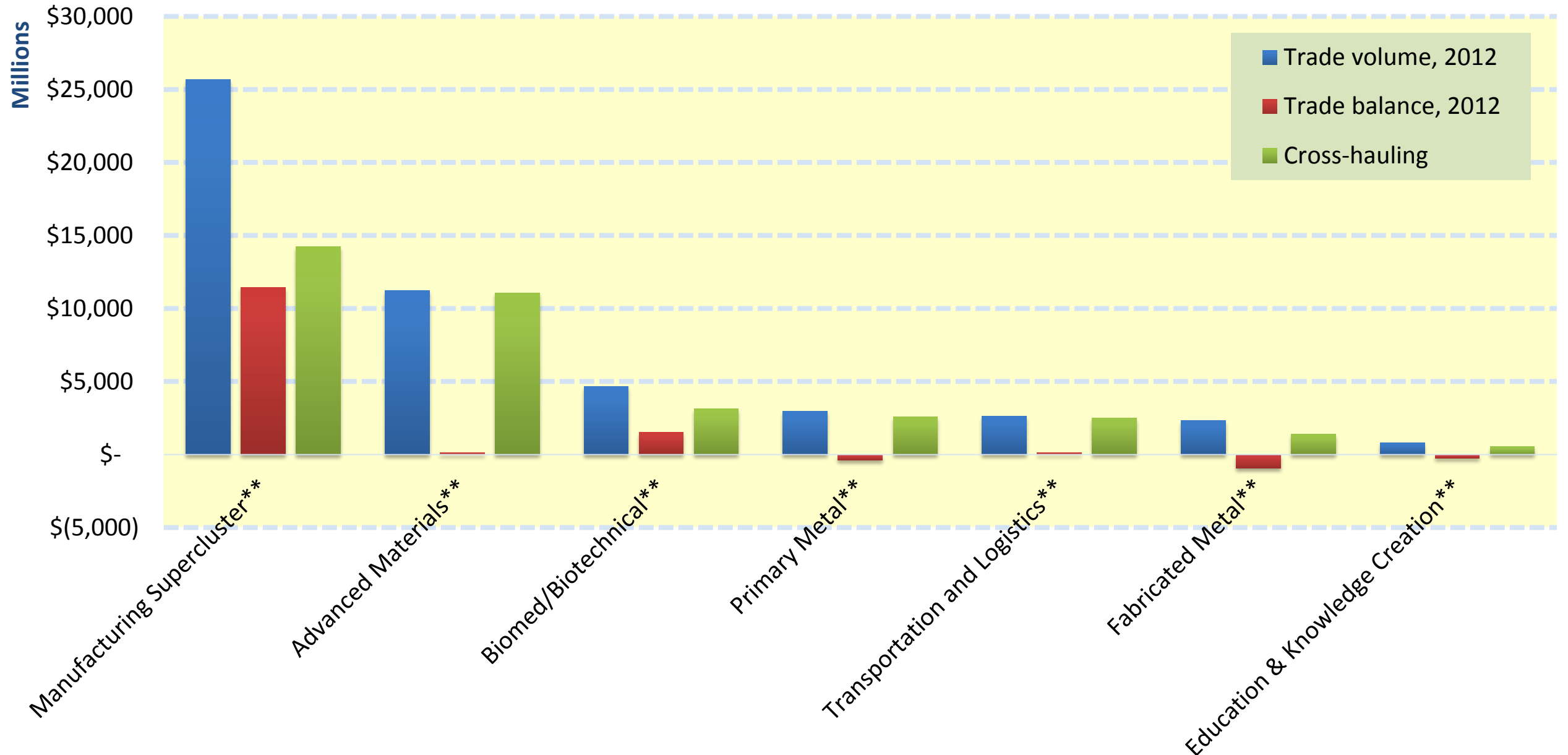
Industry Cluster	Exports, 2012	Jobs, 2012	Exports per Job, 2012
Machinery Manufacturing	\$ 15,500,503,395	15,139	\$ 1,023,848
Manufacturing Supercluster**	\$ 18,554,358,074	25,700	\$ 721,960
Chemicals & Chemical Based Products	\$ 1,737,789,249	2,624	\$ 662,300
Primary Metal Manufacturing**	\$ 1,284,634,955	2,380	\$ 539,667
Transportation Equipment Manufacturing	\$ 858,132,809	1,626	\$ 527,879
Advanced Materials**	\$ 5,669,959,770	13,929	\$ 407,061
Agribusiness, Food Processing & Technology	\$ 2,552,658,936	11,060	\$ 230,808
Mining	\$ 101,764,786	491	\$ 207,303
Energy (Fossil & Renewable)	\$ 3,413,043,828	16,497	\$ 206,893
Electrical Equipment, Appliance & Component Manufacturing	\$ 69,213,472	371	\$ 186,449
Information Technology & Telecommunications	\$ 2,090,524,047	11,258	\$ 185,695
Defense & Security	\$ 1,880,535,520	10,320	\$ 182,228
Glass & Ceramics	\$ 55,265,370	346	\$ 159,783
Business & Financial Services	\$ 6,304,048,235	40,392	\$ 156,074
Computer & Electronic Product Manufacturing	\$ 138,133,755	955	\$ 144,655
Fabricated Metal Product Manufacturing**	\$ 703,739,688	5,228	\$ 134,601
Transportation & Logistics**	\$ 1,370,899,613	12,061	\$ 113,665
Forest & Wood Products	\$ 454,676,847	4,361	\$ 104,271
Biomedical/Biotechnical (Life Sciences)**	\$ 3,093,687,194	35,389	\$ 87,419
Printing & Publishing	\$ 360,067,678	4,629	\$ 77,792
Apparel & Textiles	\$ 72,357,436	1,203	\$ 60,153
Arts, Entertainment, Recreation & Visitor Industries	\$ 373,717,565	10,426	\$ 35,846
Education & Knowledge Creation**	\$ 270,680,151	9,573	\$ 28,275

Note: ** presents "Star Clusters in 2012"

Data Source: EMSI 2014.3 (QCEW Employees, Non-QCEW Employees, Self-Employed, and Extended Proprietors), industry cluster definitions by PCRD

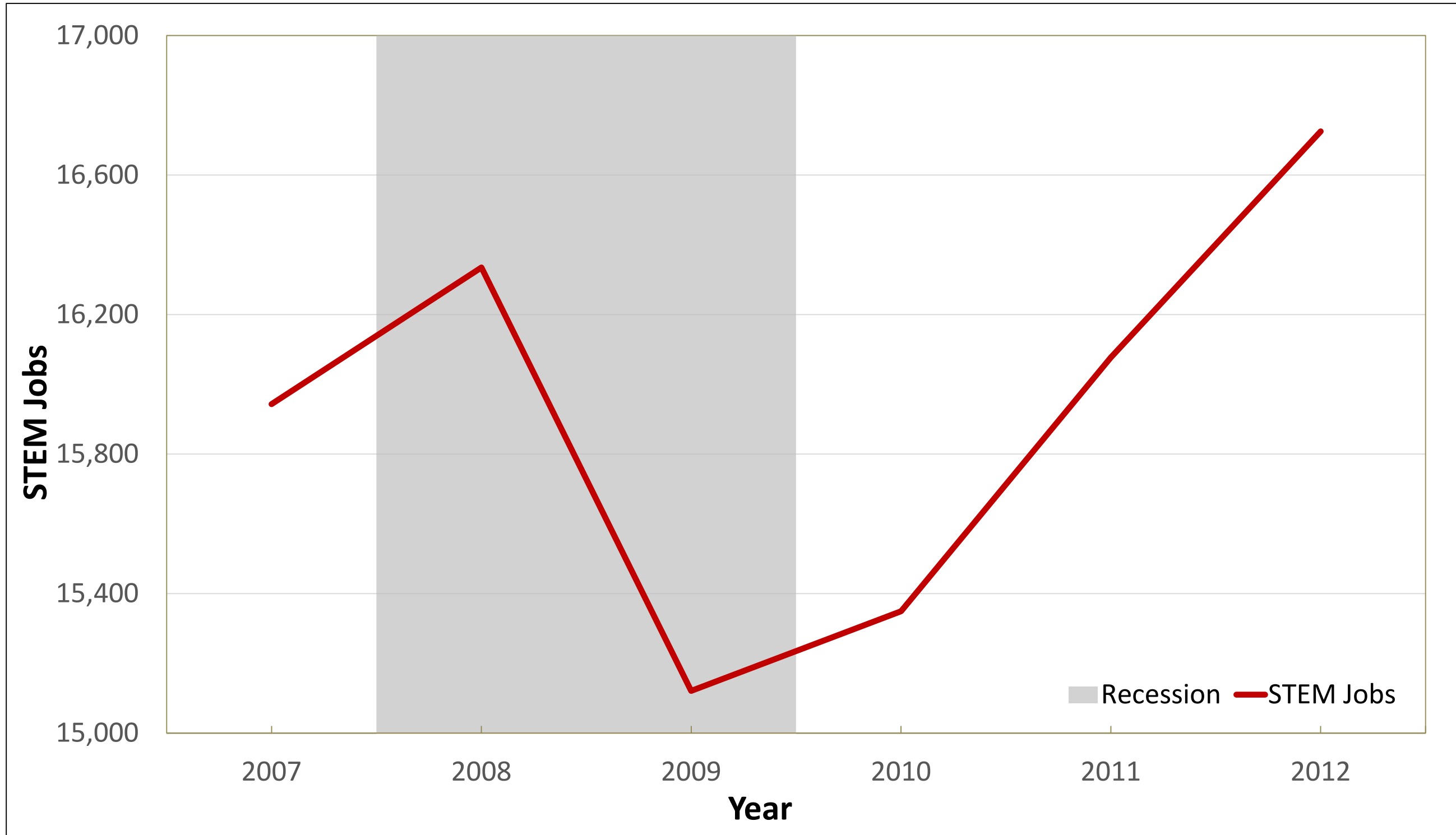
Cross-hauling Analysis of STAR Clusters, 2012

Trade Volume, Trade Balance & Cross-hauling



- Regional trade in manufacturing super cluster is dominated by sub-clusters in addition to fabricated metal and primary metal

Greater Peoria Region, STEM Occupations, 2007-2012



Data Source: EMSI 2014.3 (QCEW Employees, Non-QCEW Employees, Self-Employed, and Extended Proprietors)

Greater Peoria Region, STEM Occupations, 2007-2012

County	2007 Jobs	2012 Jobs	Percent change, 2007-2012
Peoria County, IL	6,513	6,811	4.6%
Tazewell County, IL	4,559	4,901	7.5%
McLean County, IL	4,108	4,228	2.9%
Woodford County, IL	439	455	3.6%
Logan County, IL	273	278	1.8%
Mason County, IL	51	53	3.9%
Greater Peoria region	15,943	16,725	4.9%

- All counties in Greater Peoria Region increase STEM occupations between 2007 and 2012.
- Tazewell county gained STEM occupations the most significantly.
- Overall, the region gained 4.9% of STEM jobs

PURDUE
UNIVERSITY



CENTER FOR
REGIONAL
DEVELOPMENT

PCRD.PURDUE.EDU

Purdue Center for Regional Development
Purdue University
Gerald D. and Edna E. Mann Hall, Suite 266
203 Martin Jischke Drive
West Lafayette, IN 47907-2057